

Butt Connectors

Features

- Flared cable entry to easy insertion

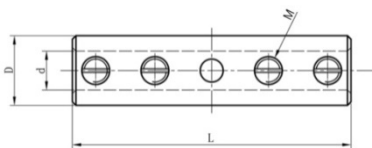
Material

- E-Cu

Surface

- Tin plated

| Part No. | Item | AWG | Dimensions(mm) | | |
|----------|---------|-----|----------------|------|------|
| | | | L | D | d |
| A020401 | BGA 8 | 8 | 25.4 | 7.1 | 4.8 |
| A020402 | BGA 6 | 6 | 27.9 | 8.1 | 5.9 |
| A020403 | BGA 4 | 4 | 31.8 | 9.5 | 7.3 |
| A020404 | BGA 2 | 2 | 35.6 | 11.1 | 8.5 |
| A020405 | BGA 1 | 1 | 35.6 | 11.7 | 9.1 |
| A020406 | BGA 1/0 | 1/0 | 40.6 | 13.0 | 10.4 |
| A020407 | BGA 2/0 | 2/0 | 47.0 | 14.2 | 11.7 |
| A020408 | BGA 3/0 | 3/0 | 49.5 | 15.7 | 13.0 |
| A020409 | BGA 4/0 | 4/0 | 52.1 | 17.2 | 14.2 |



Tube Screw Connectors

Features

- With screws for simple processing

Material

- Brass

Surface

- Nickel plated

| Part No. | Item | Cross Section mm ² | Dimensions(mm) | | | |
|----------|-----------|-------------------------------|----------------|------|------|----|
| | | | L | D | d | M |
| A020601 | ETC 10-16 | 10-16 | 40 | 10.0 | 5.5 | M4 |
| A020602 | ETC 16-25 | 16-25 | 45 | 12.0 | 7.0 | M5 |
| A020603 | ETC 25-35 | 25-35 | 45 | 13.0 | 8.5 | M6 |
| A020604 | ETC 35-50 | 35-50 | 50 | 15.8 | 10.0 | M8 |
| A020605 | ETC 50-70 | 50-70 | 55 | 17.0 | 11.8 | M8 |
| A020606 | ETC 70-95 | 70-95 | 55 | 20.0 | 13.6 | M8 |